

*Classico*®

The Classic Colour Collection

*Make a statement*

 **caesarstone**®  
Quartz Surfaces



# Make a statement

Caesarstone is a beautiful engineered quartz stone which comprises approximately 93% natural quartz.

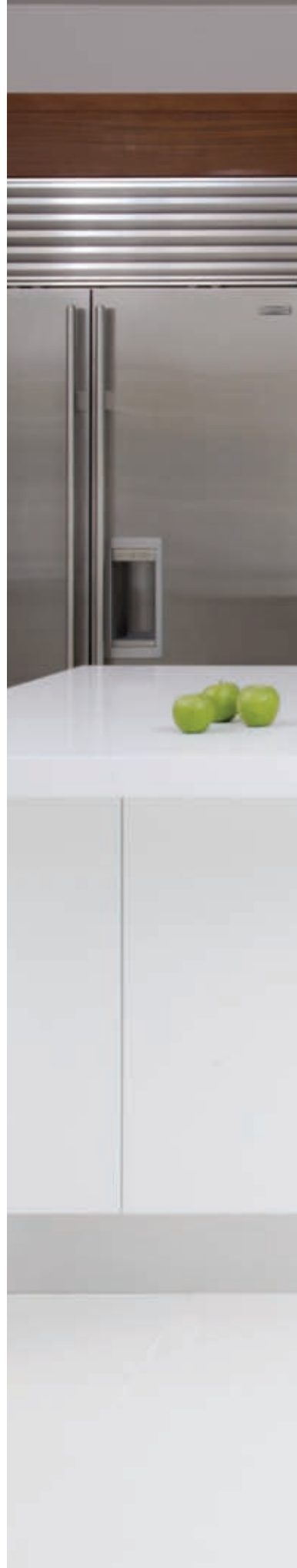
Practical, durable, and attractive, it has significant advantages over natural stone and other surfacing materials due to its superior strength and quality.



# Safe, clean surfaces

Caesarstone quartz surfaces are designed to offer a practical, hygienic and environmental-friendly solution for moist and humid surroundings.

Their non-porous nature makes them resistant to water and thus to mold, mildew and bacteria, making them ideal for use in humid environments, especially bathrooms, spas, wet saunas, bath houses etc.









# Superior durability

The following tests show the superiority of Caesarstone's physical properties compared with various typical natural stones (performed by Breton spa, Italy).

	Caesarstone Quartz Surfaces	Natural Stone	Laminate	Solid Surface
Scratch Resistant	★	★	■	●
Stain Resistant	★	■	★	★
Chip and Crack Resistant	★	■	■	★
Heat and Burn Resistant	■	■	■	■
Resistant to Household Chemicals, Acids and Solvents	★	■	■	★
Low Maintenance	★	■	■	●
Non-absorbent and Non-porous	★	■	■	★
Mold and Mildew Resistant	★	■	■	★
Flextural Strength	★	●	■	■
Colour Consistency	★	●	★	★
Immunity to Freeze and Thaw	★	★	●	●

Key ★=Excellent ■=Good ●=Poor

# Minimal maintenance

## *Ideal for bathroom applications...*

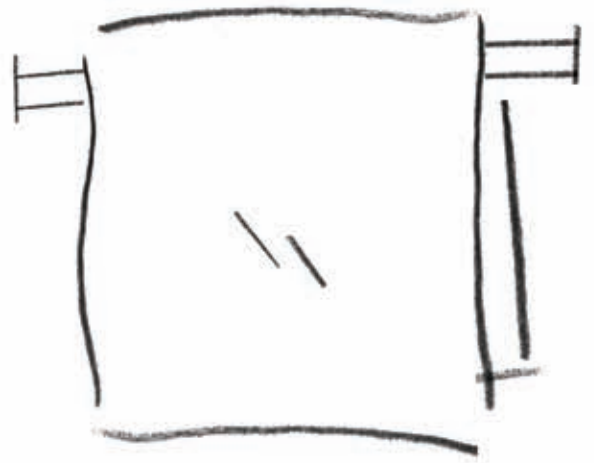
Caesarstone's quartz surfaces never need sealing and require minimal maintenance to keep them looking like new. Their hard, non-penetrable surface makes cleaning simple and in most cases, soap and water or a mild detergent are all that are required to maintain its lustre.

Minimal maintenance translates to minimal eco-damage, an important factor in preserving the environment and in green building projects.

Caesarstone's wall surfaces are 13mm thick, and can be mounted as full wall slabs. Unlike the installation of wall tiles, full Caesarstone slabs are installed with almost no spaces, requiring minimal use of bonding and sealing materials. This in turn simplifies the building process and minimises the need to periodically replace worn materials.

No matter what your spa or bathroom demands, Caesarstone products enhance and inspire designers to create an atmosphere of relaxation and serenity.





Wild Rice 4360 ▶

◀ Snow 2141 wall panelling & sink,  
Jet Black 3100 vanity top



# Our colour range

With 32 colours stocked in the UK and over 70 colours available globally, Caesarstone offers customers the widest possible range of designed quartz surfaces with the finest texture options available in the quartz surface industry today.

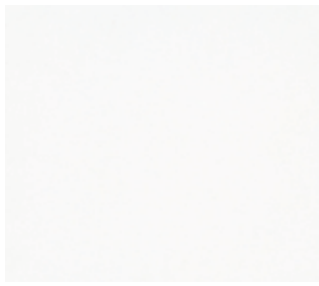
In collaboration with Caesarstone's designers, the research and development team is continually developing leading-edge colours and designs that influence trends and inspire creative, functional applications.

Please see [www.caesarstone.co.uk](http://www.caesarstone.co.uk) for colour options or view/request our colour palette sample case.









Pure White

1141



Snow

2141



Buttermilk

4220



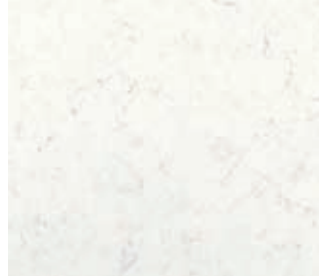
Ivory

2220



Organic White

4600



Frosty Carrara

5141



Dreamy Marfil

5220



Bondi

3200



Osprey

3141



Misty Carrara

4141



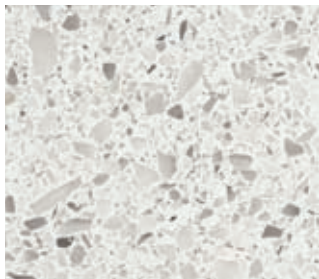
Ivory Shimmer

2242



Creme Brule

4255



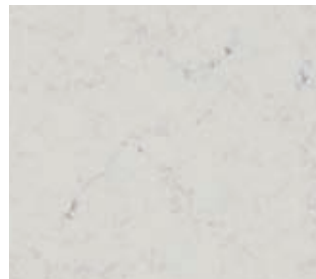
Nougat

6600



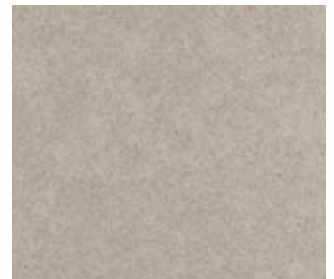
White Reflections

7141



London Grey

5000



Latte

2350

## Colour options

Caesarstone's quartz surfaces retain the cool, tactile qualities of natural stone while enabling the user with a durable work surface designed for ease and convenience.

Designs range from fine-grained salt-and-pepper patterns to coarse-grained colour blends with a variegated visual texture. Each surface has a perfectly polished finish.

Caesarstone is made from natural quartz and as such some variation in colour and aggregate may occur. We always recommend making final colour selection off an actual sample of Caesarstone as the colours depicted in this brochure are only as close as modern printing methods will allow.

Note: Whilst every effort is made to ensure accuracy and colour, it is not always possible to reproduce actual colours due to limitations of the printing process.



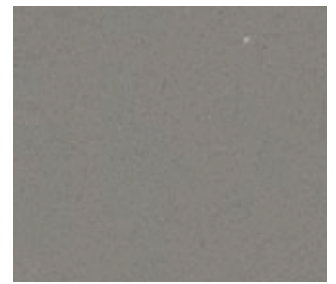
Cashmere 2370



Shitake 4230



Oyster 4030



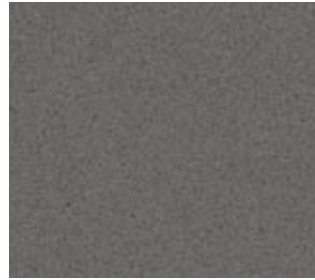
Grey Shimmer 2024



Mink 4350



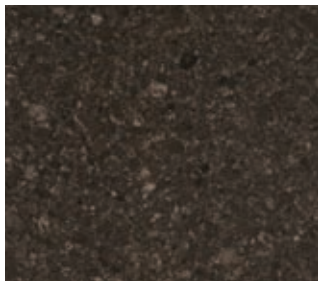
Ginger 4330



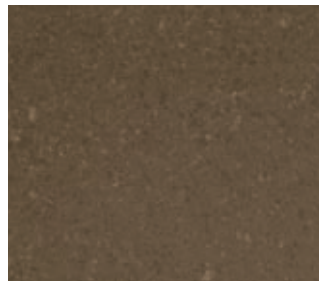
Concrete 2003



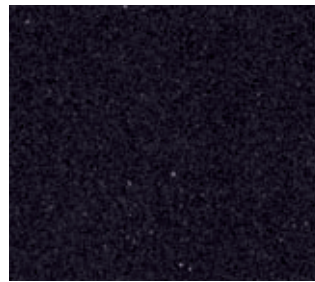
Raven 4120



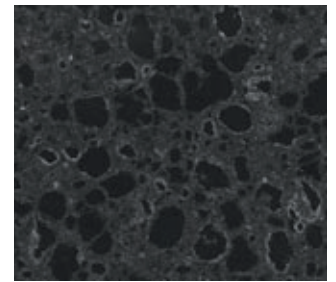
Cocoa Fudge 4260



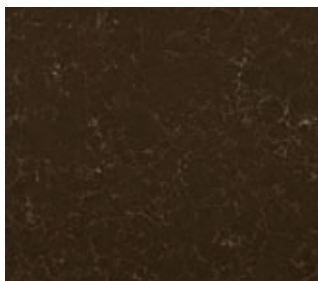
Wild Rice 4360



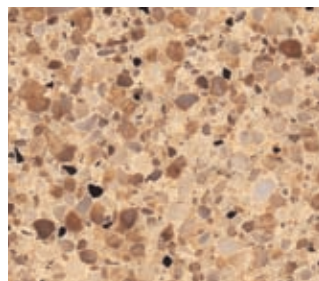
Jet Black 3100



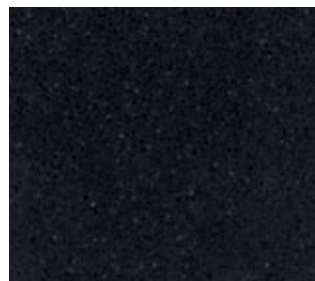
Black Rocks 4170



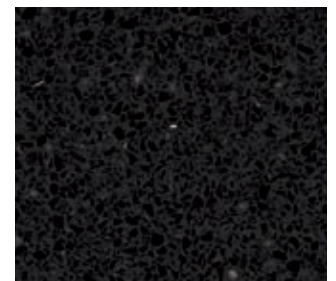
Emperador 5380



Caramel 9350



Black Noir 6100



Ebony Reflections 7100

## Slab dimensions

The standard slab dimensions of Caesarstone's quartz surfaces are 3060mm x 1440mm, three thicknesses are available: 20mm, 30mm, and 13mm on selected colours.

Thickness	Slab Weight	Slab Weight/m <sup>2</sup>
30mm	330kg	75kg/m <sup>2</sup>
20mm	220kg	50kg/m <sup>2</sup>
13mm	145kg	33kg/m <sup>2</sup>





# Peace of mind...

## ISO 14001

Caesarstone was the world's first quartz surface company to comply with ISO 14001, the international standard for environmental preservation regulations. This guides our working according to environmental goals; monitoring activities; investing in tools for enhancing a quality environment; training employees and suppliers; implementing health and safety procedures and maintaining environment-friendly production processes.

## GREENGUARD

All Caesarstone surfaces comply with American GEI (GREENGUARD Environmental Institute) certification ensuring they are safe for the environment, do not release harmful substances into the air and thus contribute to improving indoor air quality.

## LEED

Developed by USGBC (United States Green Building Council), Leed (Leadership in Energy and Environmental Design) is the American accredited certification program for design, construction and operation of high performance green buildings. Caesarstone's high LEED ranking proves our compliance with ecological standards and makes us natural partners for green buildings. Working with Caesarstone products ensures architects and contractors a high LEED score for their projects.



# *Low maintenance*

Caesarstone's quartz surfaces never need sealing and require minimal maintenance to keep them looking like new.

The hard, non-penetrable surface makes cleaning simple and in most cases, soap and water or a mild detergent are all that are required to maintain its lustre.

## *15 Year Guarantee*

Every Caesarstone surface comes with a comprehensive 15 year guarantee to provide further peace of mind.







# Surface care...

Caesarstone quartz surfaces require only simple and routine care to maintain its stunning appearance. To clean Caesarstone we recommend using warm water and a mild detergent or quality 'spray and wipe' cleaner. Stubborn stains or dried spills. Any multi-purpose cleaner or detergent can be used on stubborn stains, for a more thorough cleanse a good quality, mildly abrasive cream cleaner is recommended.

To remove adhered materials like food, gum and nail polish firstly scrape away the excess with a sharp, flat blade or plastic putty knife. Any grey metal marks that may be left can be removed with a regular cleaning agent. Bleach and acetone can also be used, if required, however the surface should be rinsed with water immediately after use. Avoid the use of alkaline products (pH 8.5 or higher), such as oven cleaner or paint remover as they may etch and damage the surface.

Heat resistance Caesarstone can tolerate moderately hot temperatures for brief periods of time. Prolonged exposure might result in discolouring or otherwise damage the surface. Direct contact between very hot pots and the Caesarstone surface should be avoided. We recommend using an insulator/hot pad/pot stand/trivet, especially when using cooking implements like frying pans, woks or kettles.

## *Tough – Yes, indestructible – No.*

As with any surface, Caesarstone can be permanently damaged by exposure to strong chemicals and solvents that undermine its physical properties. Do not use products that contain trichlorethane or methylene chloride, such as paint removers or paint strippers.

Avoid any highly aggressive cleaning agents like oven/grill cleaners and dishwasher agents that have high alkaline/pH levels. Products containing oils or powders may leave a residue and should be thoroughly rinsed off. Should your surface be accidentally exposed to any of these damaging products, rinse immediately with water to neutralise the effect.

Scratch resistance Caesarstone is a scratch resistant surface; however, avoid abuse using sharp objects such as sharp knives or screw drivers directly on to the surface.



*"The Caesarstone looks stunning in our kitchen, and the hard, non-penetrable surface means cleaning it is easy and requires minimal maintenance to keep it looking like new. We would have no hesitation in recommending Caesarstone."*

## *Case Study – Eating in...*

Caesarstone provided a stunning and elegant finish to an immaculately presented kitchen, offering style and practicality. The design combines clean lines with an elegant look of flawless beauty supported by the quality material of Caesarstone surfaces. Practical, durable and attractive, it has significant advantages over natural stone and other surfacing materials due to its superior strength and quality.

The Fabricator commented, "We have great confidence in Caesarstone and their range of quartz surfaces. It offers consistency of colour due to the fact it is man-made, which makes matching joints far less problematic from a fabricators point of view. We were able to create a luxurious and immaculate kitchen using the 1141 Pure White surface."

Pure White 1141 ►





◀ Mink 4350

## Case Study – Dining out...

Head Chef, and owner, Bjorn Van Der Horst, commented: "My kitchen will be used heavily, so Caesarstone was the natural choice for my work surfaces because it is so strong, scratch and stain resistant.

One of the major factors for me is that it's non-porous – this is very important, as the surface will get such heavy use. When serving the public on a daily basis hygiene is always one of the main priorities to be taken into account, and I know this element is covered with Caesarstone."

*"One of the major factors for me is that it's non-porous – this is very important, as the surface will get such heavy use"*









*Make a statement*

Distributed by



C.R. Laurence  
Charles Babbage Avenue  
Kingsway Business Park  
Rochdale OL16 4NW

Freephone: 00 800 0421 6144  
Freefax: 00 800 0262 3299  
e-mail: [caesarstone@crlaurence.co.uk](mailto:caesarstone@crlaurence.co.uk)  
[caesarstone.co.uk](http://caesarstone.co.uk)

© Copyright Caesarstone 2013  
Caesarstone® is a registered trademark